

Hartung Farms

Inventory & Assessment of Common Area Trees

June 12, 2019

Prepared by John Nelson, 503-349-5187, jnhouseboat@gmail.com

Native trees existing at time of development

Oregon White Oak (*Quercus garryana*)
Pseudotsuga menziesii (Douglas fir)
Acer macrophyllum (Oregon Bigleaf maple)
Oregon ash (*Fraxinus latifolia*)

Trees planted during development

Shore Pine (*Pinus contorta*)
Scotch Pine (*Pinus sylvestris*)
Ponderosa pine (*Pinus ponderosa* sp.)
English Birch (*Betula pendula*)
Norway Maple (*Acer platanoides*)
Sweetgum (*Liquidambar styraciflua*)
Vine Maple (*Acer circinatum*) widely considered a tree/shrub

Post construction and “modern” trees

Ginkgo (*Ginkgo biloba*)
Red maple (*Acer rubrum*)
Sequoia gigantea (Giant sequoia)

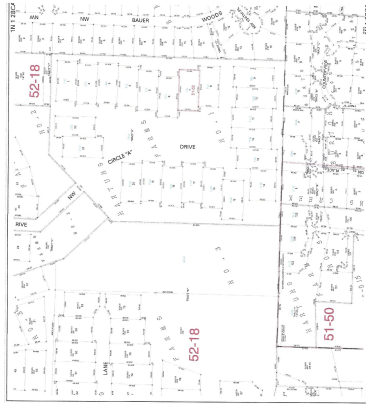
Tree count (April 2019)

(Does not include woodland adjacent to Lake Hartung and natural area in Hurting 4)

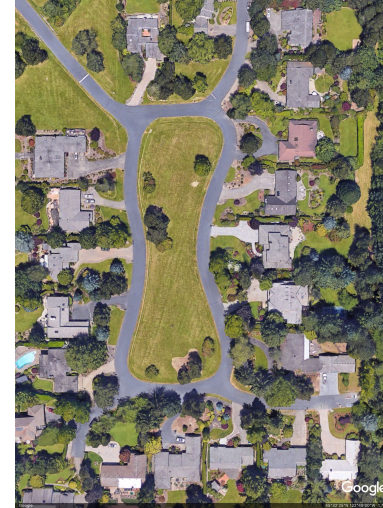
2	Oregon White Oak (<i>Quercus garryana</i>)
4	Douglas fir (<i>Pseudotsuga menziesii</i>)
2	Oregon Bigleaf maple (<i>Acer macrophyllum</i>)
161	Shore Pine (<i>Pinus contorta</i>)
18	Scotch Pine (<i>Pinus sylvestris</i>)
4	Pondrosa Pine (<i>Pinus ponderosa</i>)
20	English Birch (<i>Betula pendula</i>)
44	Norway Maple/Red Maple (<i>Acer platanoides/rubrum</i>)
21	<i>Acer circinatum</i> (Vine Maple) widely considered a tree/shrub
12	Ginkgo (<i>Ginkgo biloba</i>)
2	<i>Sequoia gigantea</i> (Giant sequoia)
6	Leland Cypress (<i>Cupressocyparis leylandii</i>)
1	Pin oak (<i>Quercus palustris</i>)
1	Cherry (unknown)

Inventory and assessment methods

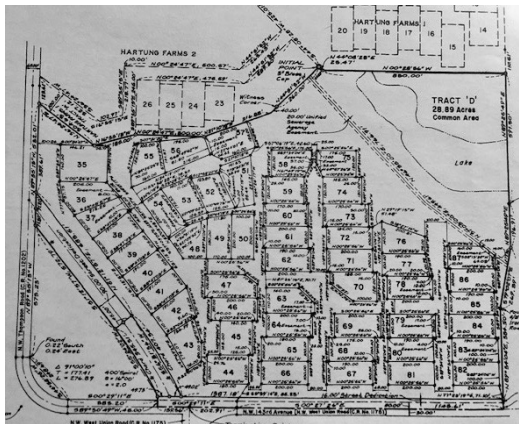
Washington County Tax Maps



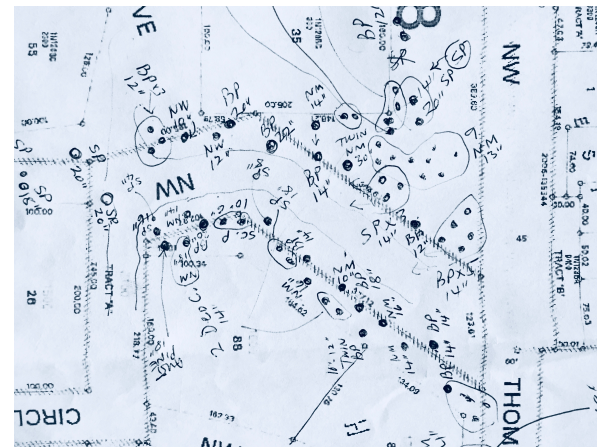
Aerial photos



Original Hartung plat



Field observations

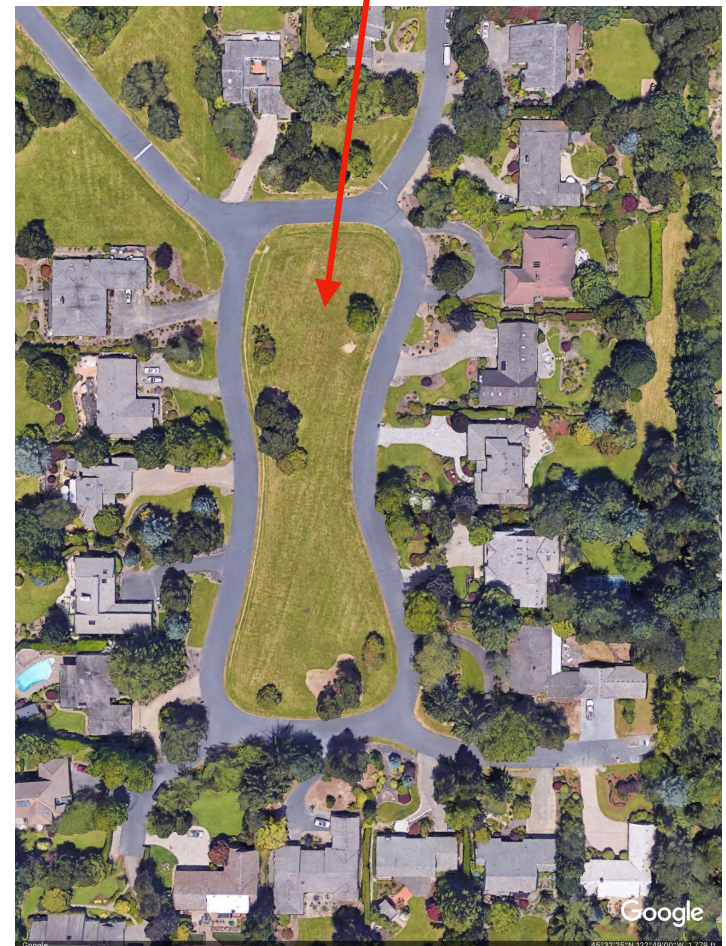
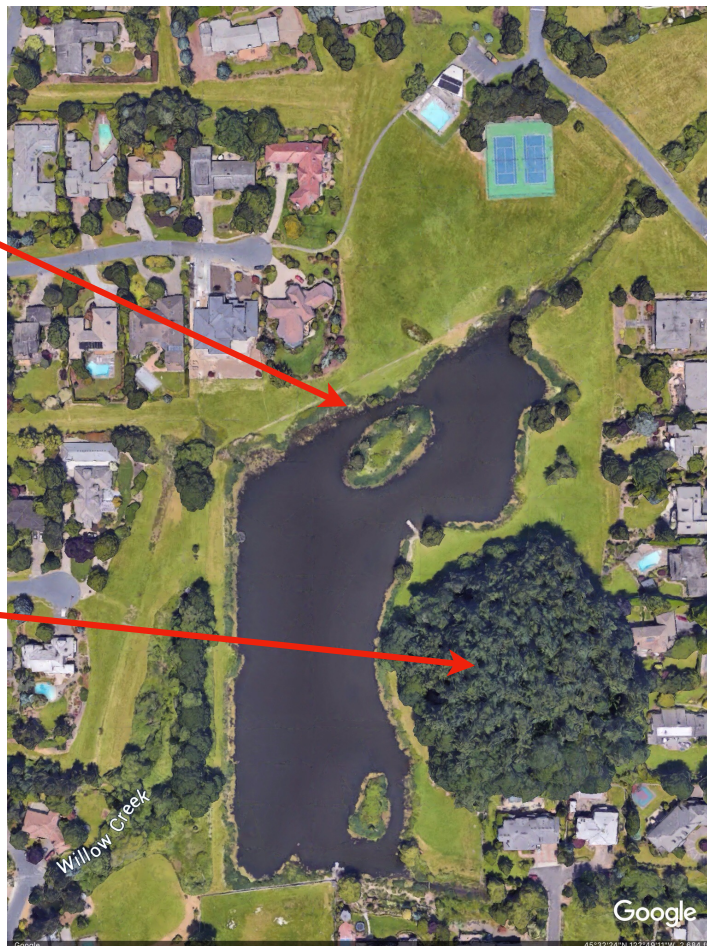


Inventory Zones: Circle A Common, Hartung Lake, and Willow Creek

Circle A "Common"

Riparian lake fringe
and Willow Creek

Douglas fir
woodland



Inventory zones: 143rd frontage and Entry

NW 143rd



Hartung Farms
entrance



Inventory zone: NW Thompson frontage



NW Thompson Rd

Shore pine mortality: Shade and over watering

Poor growth, spindly branches, crown uneven and lacking fullness. May have foliage diseases. Shore pine is a sun-loving plant and does poorly in shade.

Sudden death. Crown becomes red and foliage dies. Roots develop poorly. Watering shore pine in lawn settings is hard on the tree, as they are adapted to the dry Oregon summer/fall. Watering can increase root diseases such as *Phytophthora* spp. and *Armillaria*. Death is associated with poor root development.



Shore pine mortality 2

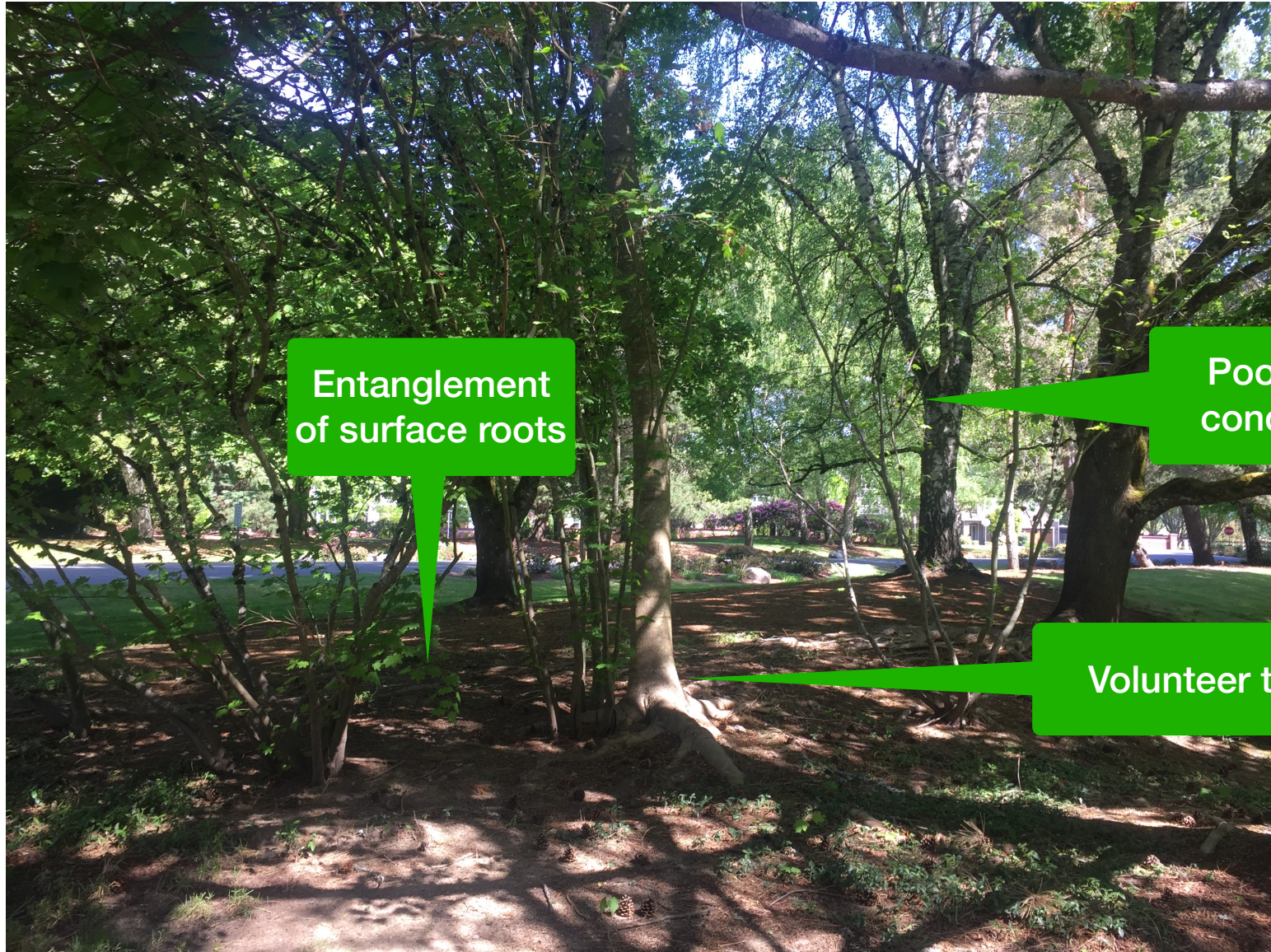
Lichen populate dead branches



Dead branching



**Reduction of overcrowding will
increase sunlight and improve surface growing conditions**



Entanglement
of surface roots

Poor light
conditions

Volunteer tree

**Overcrowding leads to unhealthy trees,
surface root entanglements, and barren understory**



Questionable purpose and design intent and no erosion control



Prune unbalanced “hazard” trees, or remove entirely



Remove this branch

Remove this tree



Remove invasive plants like English Ivy and Himalayan Blackberry

Restore native riparian vegetation with Willow, Red twig Dogwood, native Rose (upper slopes)



Establish your own performance specifications: “Define Define “acceptable practices”



Remove stumps

Perform a “complete” job

Avoid lawn/tree root conflicts

Advise (new) owner’s about planting trees



Priority 1: Main entry



Problem:

Overcrowding, lack of sunlight, wet surface

Solution: *Remove/prune selected Pine, Birch, Norway Maple trees, and low shrubbery*

Result: *Improved appearance and improved landscape health*

Priority 2: Neighborhood Core



- Thin pines at tennis courts
- Remove dead tree
- Prune dead/dying/unbalanced branches



Priority 3: Frontage



Employ proper pruning techniques



Remove "leaners"

Priority 4: “Hartung Park”

Your woodland and lake are a treasure!

Steps to insure long-term woodland health:

1. Remove all English Ivy

By volunteers

*2. Remove small diameter Fir trees, Holly, Maple,
and invasives.*

Donate wood to Washington County Woodcutters

Hartung Park improvements



Thin small diameter trees;
remove ivy; safeguard
specimen vegetation



Excellent trail
improvements
May 21, 2019